

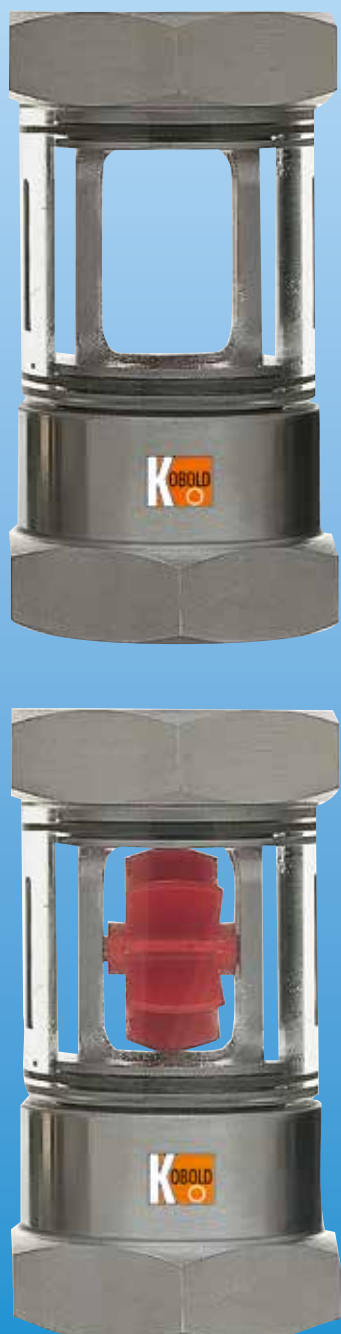


Flow Indicator for liquids



measuring
•
monitoring
•
analysing

DAH



- Viscosity: 1 - 150 mm²/s
- Indication range:
0.4 - 4 ... 8 - 100 l/min water
- p_{max}: 16 bar; t_{max}: 180 °C
- Connection:
G 1/4 ... G 1 1/2 female,
1/4" ... 1 1/2" NPT
- Material:
brass, stainless steel

GS



KOBOLD companies worldwide:

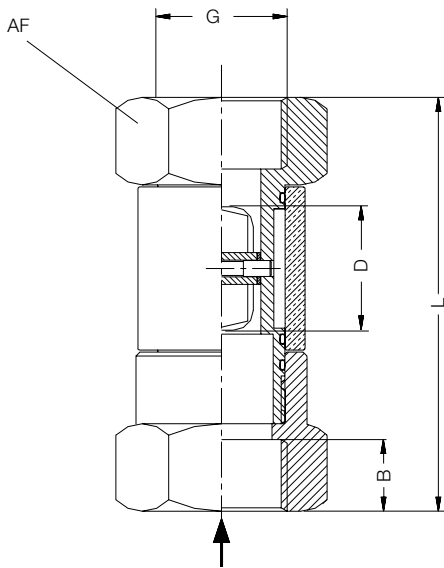
AUSTRALIA, AUSTRIA, BELGIUM, BULGARIA, CANADA, CHINA, CZECHIA, EGYPT, FRANCE, GERMANY, GREAT BRITAIN, HUNGARY, INDIA, INDONESIA, ITALY, MALAYSIA, MEXICO, NETHERLANDS, PERU, POLAND, REPUBLIC OF KOREA, ROMANIA, SPAIN, SWITZERLAND, THAILAND, TUNISIA, TURKEY, USA, VIETNAM

KOBOLD Messring GmbH
Nordring 22-24
D-65719 Hofheim/Ts.
Head Office:
+49(0)6192 299-0
+49(0)6192 23398
info.de@kobold.com
www.kobold.com

Application

The flow indicators DAH are used for mounting in pipes for liquids. The instruments are equipped with female threads at inlet and outlet and can be supplied with either brass or stainless steel fittings.

Dimensions



Technical Details

Material

- Housing: nickel plated brass (DAH-x1..) stainless steel 1.4305 (DAH-x2..)
- Inlet: nickel plated brass (DAH-x1..) stainless steel 1.4305 (DAH-x2..)
- Sight glass: borosilicate glass
- O-Rings: NBR (DAH-x1..) FPM (DAH-x2..)
- Rotor: POM (DAH-x1..) PTFE (DAH-x2..)
- Rotor spindle: stainless steel 1.4305

Model	Nominal size DN [mm]	Female thread G	Female thread NPT	Thread length B DIN 3852 [mm]	Total length L [mm]	Width across flats AF [mm]
DAH-...01H	8	¼"	¼"	12	71	36
DAH-...02H	10	⅜"	⅜"	12	71	36
DAH-...03H	15	½"	½"	14	86	46
DAH-...04H	20	¾"	¾"	16	94	46
DAH-...05H	25	1"	1"	18	104	46
DAH-...06H	32	1 ¼"	1 ¼"	20	120	65
DAH-...07H	40	1 ½"	1 ½"	22	130	65

Flow Indicator with Rotor

Order Details (Example: DAH-1101H R08)

DN	Indication range Water [l/min]	Δ P at Q _{max} [bar]	p _{max} [PN]	t _{max} [°C]	Weight [kg]	Model		Connection thread	
						Nickel plated brass with rotor	Stainless steel with rotor	G	NPT
¼"	0.4 - 4	0.25	16	100	0.3	DAH-1101H..	DAH-1201H..	R08	N08
⅜"	0.6 - 8	0.25	16	100	0.28	DAH-1102H..	DAH-1202H..	R10	N10
½"	1 - 12	0.25	16	100	0.6	DAH-1103H..	DAH-1203H..	R15	N15
¾"	1 - 25	0.25	16	100	0.65	DAH-1104H..	DAH-1204H..	R20	N20
1"	1.6 - 40	0.25	16	100	0.7	DAH-1105H..	DAH-1205H..	R25	N25
1 ¼"	8 - 80	0.25	16	100	1.5	DAH-1106H..	DAH-1206H..	R32	N32
1 ½"	8 - 100	0.25	16	100	1.6	DAH-1107H..	DAH-1207H..	R40	R40

Flow Indicator without Rotor

Order Details (Example: DAH-2201H R08)

DN	Q _N [l/min]	Δ P at Q _{max} [bar]	p _{max} [PN]	t _{max} [°C]	Weight [kg]	Model		Connection thread	
						Nickel pl. brass without rotor	Stainless steel without rotor	G	NPT
¼"	8,3	0,2	16	100*/180**	0,3	DAH-2101H..	DAH-2201H..	R08	N08
⅜"	11,1	0,2	16	100*/180**	0,28	DAH-2102H..	DAH-2202H..	R10	N10
½"	31,5	0,2	16	100*/180**	0,6	DAH-2103H..	DAH-2203H..	R15	N15
¾"	38,0	0,2	16	100*/180**	0,65	DAH-2104H..	DAH-2204H..	R20	N20
1"	36,5	0,2	16	100*/180**	0,7	DAH-2105H..	DAH-2205H..	R25	N25
1 ¼"	125	0,2	16	100*/180**	1,5	DAH-2106H..	DAH-2206H..	R32	N32
1 ½"	125	0,2	16	100*/180**	1,6	DAH-2107H..	DAH-2207H..	R40	R40

* DAH 21 t_{max} 100 °C
 ** DAH 22 t_{max} 180 °C