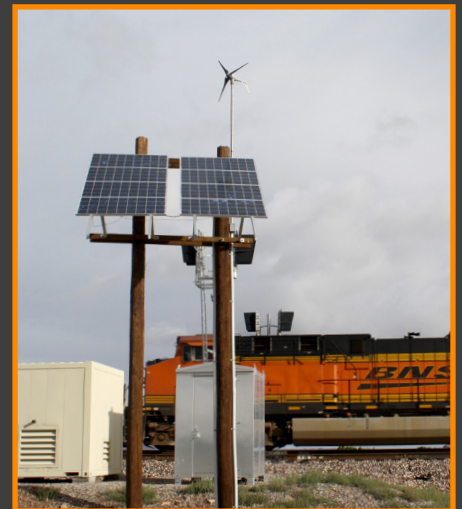


aiR™ COMPLETES ANY OFF GRID SYSTEM

- ✓ SIMPLE, AFFORDABLE, RELIABLE POWER
- ✓ EASILY INTEGRATES WITH PV
- ✓ MAXIMUM POWER IN WINTER
- ✓ NIGHT TIME POWER PRODUCTION
- ✓ OVER 150,000 UNITS INSTALLED SINCE 1995



primuswindpower

MANUFACTURED IN COLORADO, USA

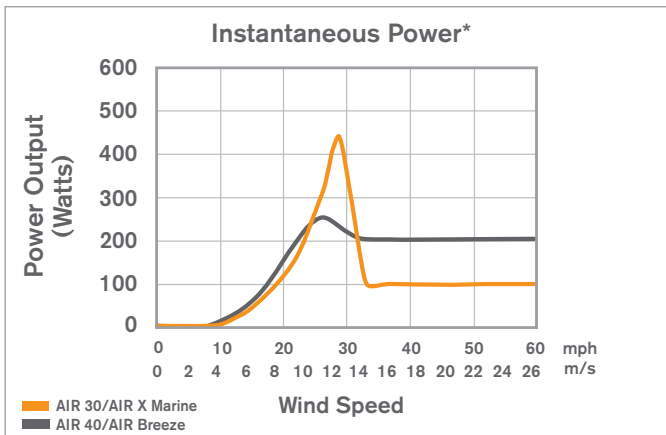
Sweden:
Kompauto Nordic AB
Phone +46 10 130 10 00
E-mail: info@kompauto.se

Norway:
Kompauto Norway AS
Phone: +47 55 55 86 99
E-mail: info@kompauto.no

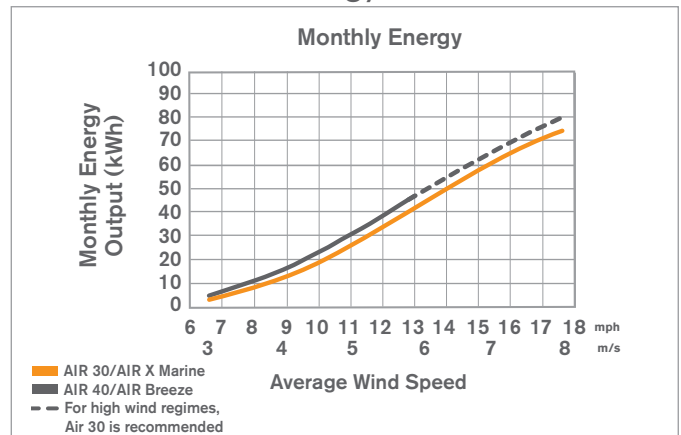
TURBINE SPECIFICATIONS



AIR Power Curve



AIR Energy Curve



*Factors affecting turbine output include site turbulence, elevation and air temperature

Technical Specifications

AIR BREEZE/AIR 40/AIR 30/AIR X MARINE	
Energy	AIR 40/AIR Breeze: Approx. 40 kWh/mo at 5.5 m/s (12 mph) AIR 30/AIR X Marine: Approx. 30 kWh/mo at 5.5 m/s (12 mph)
Optimal Operating Environment	AIR 40/AIR Breeze: Quiet operation in low to moderate wind regimes AIR 30/AIR X Marine: Industrial applications in moderate to high wind regimes
Swept Area	1.07 m ² (11.5 ft ²)
Rotor Diameter	1.17 m (46 in)
Weight	5.9 kg (13 lb)
Shipping Dimensions	686 x 318 x 229 mm (27 x 12.5 x 9 in) 7.7 kg (17 lb)
Startup Wind Speed	AIR 40/AIR Breeze: 3.13 m/s (7 mph) AIR 30/AIR X Marine: 3.58 m/s (8 mph)
Voltage	12, 24 and 48 VDC
Turbine Controller	Mircoprocessor-based smart controller
Body	Cast aluminum (AIR Breeze/AIR X Marine: corrosion resistant paint)
Blades	(3) Injection-molded composite
Alternator	Permanent magnet brushless
Overspeed Protection	Electronic torque control
Survival Wind Speed	49.2 m/s (110 mph)
Mount	1.5 in schedule 40 pipe 48 mm (1.9 in) outer diameter
Warranty	5 year limited warranty

Applications	AIR 30 AIR X Marine	AIR 40 AIR Breeze
REMOTE HOMES		✓
MARINE AND SAILBOATS		✓
RECREATIONAL VEHICLES		✓
RAILROAD	✓	
TELECOMM	✓	
OIL AND GAS	✓	
SCADA SYSTEMS	✓	
LIGHTING SYSTEMS		✓
CATHODIC PROTECTION	✓	
COASTAL APPLICATIONS	✓	

Towers and Accessories

- 29' EZ TOWER KIT (PIPE INCLUDED)
- 27' GUYED TOWER KIT (PIPE NOT INCLUDED)
- 45' GUYED TOWER KIT (PIPE NOT INCLUDED)
- 33' MONOPOLE TOWER
- 36" AND 48" GALVANIZED AUGERS
- 9' MARINE TOWER KIT
- MARINE TOWER HARDWARE KIT